

---

# System 1200

---

## Owner's Guide



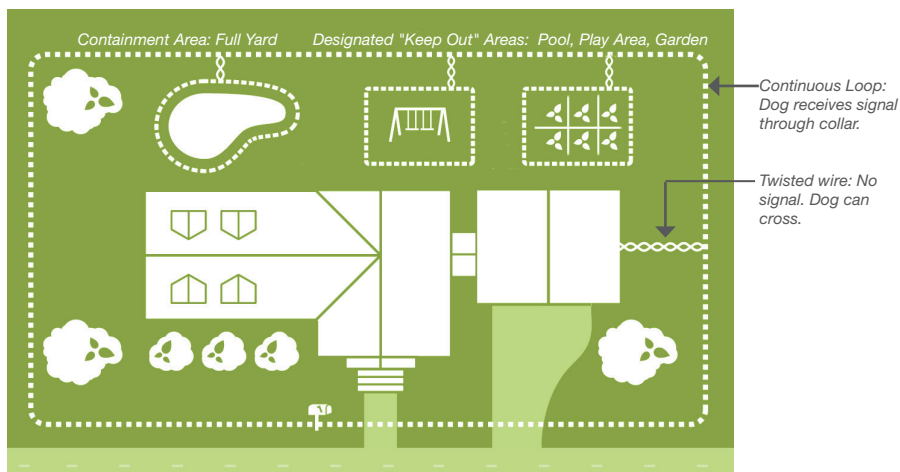
.....



# HIDDEN FENCE INSTALLATION

## Installation Basics

The fence is created by burying a wire in your yard. Your DogWatch Dealer will work with you to establish the best configuration for you, your dog and your yard.



The Hidden Fence Transmitter sends a coded **digital FM radio signal** through a wire buried in your yard (the boundary wire). The wire is buried 3-4" beneath the surface of the yard or can lie on top of the ground (e.g. in wooded or rocky areas.) **It is not electrified**, so it can also be installed in water (streams, in lakes, etc.)

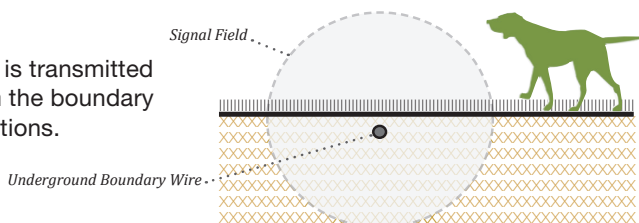
The boundary wire can enclose up to 200 acres. It can be configured to enclose all or part of your yard. It can be used to keep your pets inside the boundary and/or out of designated areas such as the pool, your garden or other areas.

To work properly, the boundary wire must form a **continuous loop**. A **twisted wire cancels the signal** and can be used in locations where you want the dog to be able to cross the wire without receiving a warning signal or correction, such as where the wire travels from the house to the boundary perimeter.

## Signal Field

The signal field is typically set at 3 to 6 feet (each side of the wire) but can be set from 1 to 10 feet (each side). The signal field is adjusted by the **Range Control** on the Transmitter. Your Dealer will determine an appropriate signal field for your pets and will set the Transmitter accordingly.

The radio signal is transmitted equidistant from the boundary wire in ALL directions.

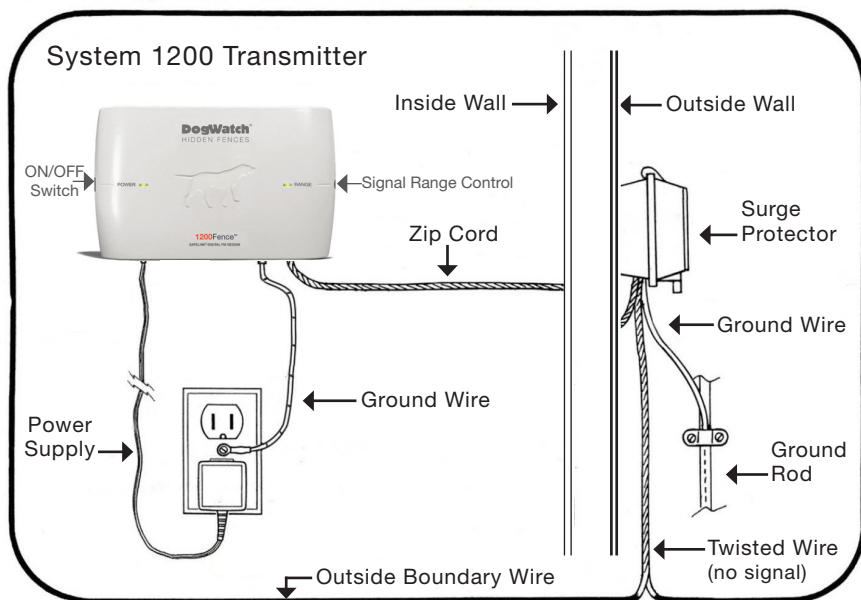


---

## HIDDEN FENCE INSTALLATION

---

Your Hidden Fence Transmitter is mounted on a wall near a power outlet. The Transmitter is connected to your boundary wire through a surge protector (as shown below) which prevents lightning power surges from damaging your system.



---

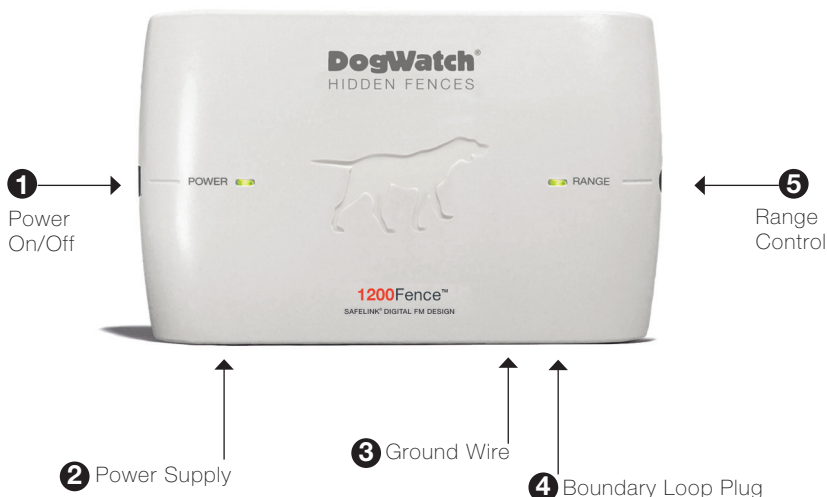
## IMPORTANT SAFEGUARDS & REMINDERS

---

- Never adjust the Transmitter while your dog is wearing the receiver collar.
- If you adjust the SIGNAL RANGE on the Transmitter, be sure you check the signal range in the yard before letting your dog out. Your dog will need to learn where the new avoidance zone begins.
- Keep the Transmitter and receiver collar out of reach of children.
- Never attempt to service the Transmitter or receiver collar yourself.
- Be sure your Transmitter and surge protector are properly grounded.
- Fit the collar snugly around your dog's neck. It should be touching the skin without creating pressure where it touches.
- Remove the collar regularly to check the dog's neck for irritation. We recommend removing the collar when the dog is inside at night. Pressure sores may develop if the collar is too tight or left on for long periods without removal or repositioning.
- Make sure the battery is fresh and is inserted correctly.
- Train your dog as instructed by your Dealer.

### Hidden Fence Transmitter

The Transmitter's coded digital FM radio signal can be adjusted, allowing you to control the settings of the Hidden Fence around your property.



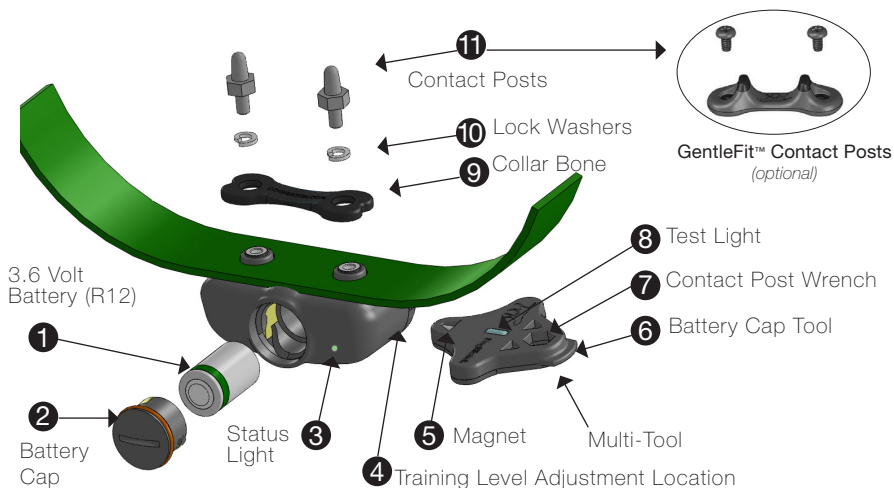
*Never adjust the transmitter while your dog is wearing the receiver collar.*

- 1. Power On/Off:** This switch gives you easy access to turn the Transmitter 'ON' or 'OFF'. The Power light on the front panel lets you know that it is operating properly.
- 2. Power Supply:** The Transmitter is powered by the power supply/adapter provided with the Transmitter. The power supply is plugged into a properly grounded 110 volt outlet and the adapter is plugged into the "PWR" jack on the bottom of the Transmitter.
- 3. Ground Wire:** The green ground wire connects to the Transmitter at the location labeled "GND." The round connector on the green ground wire is attached under the screw on the outlet faceplate. It will, however, only be effective if your outlet is properly grounded. If you have any questions about having a properly grounded outlet, consult your local electrician.
- 4. Boundary Loop Plug:** Your system includes a zip cord with a plug on one end. This plug fits into the hole marked "Loop" on the bottom of the Transmitter. This is the beginning of the boundary wire that is buried in your yard.
- 5. Range Control:** The radio signal is transmitted from the boundary wire in all directions. The signal range (the distance the signal broadcasts from the wire) is adjusted by the Range Control on the transmitter. The recommended signal range (on each side of the wire) is 6-10 feet. Your DogWatch Dealer will adjust the range according to the personality and traits of your dog. Consult your DogWatch Dealer before making any adjustments yourself.

# SYSTEM 1200 RECEIVER COLLAR FEATURES

## System 1200 Collar

The components and features of both the R12 (below) and the R12mini (R12m) are the same except the R12m is smaller and uses a different battery with a shorter battery life.



## Batteries

### Resetting the Low Battery Light

1. Remove the old battery.
2. Before inserting a new battery, let the receiver collar **sit for five minutes** with no battery. (If you forget to wait prior to inserting a new battery, the "low battery" light will continue to blink red until it automatically resets itself after 24 hours.)
3. After five minutes, insert the new battery.

### Battery Insertion Instructions

**R12:** 3.6 volt lithium battery.  
2-year battery life with normal use.  
Insert battery **POSITIVE** end down.

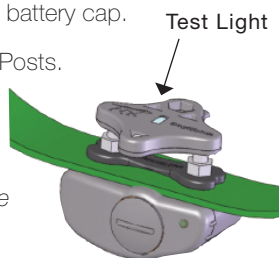


**R12m:** 3.0 volt (1/3N) lithium battery.  
6-month battery life with normal use.  
Insert battery **NEGATIVE** end down.



**IMPORTANT:** The use of any battery other than a battery authorized by DogWatch Inc. can cause erratic operation of the receiver collar and could cause permanent damage. The use of any unauthorized battery will void the Warranty on the receiver collar.

- 
- 
1. **Battery:** R12 = 3.6 volt lithium. R12mini = 3.0 volt (1/3N) lithium.
  2. **Battery Cap:** Our waterproof battery cap protects your battery from the elements. Remove using the Battery Cap tool (#6).
  3. **Status Light:** The Status Light provides information about battery status and is used to determine training levels.
  4. **Training Level Adjustment Location:** Your receiver provides four Training Levels: Audible Only, Level 1 (extra low), Level 2 (low), Level 3 (medium), Level 4 (high). When the receiver is first shipped from the manufacturer, it will automatically be set to Training Level 2 (low).
  5. **Magnet:** The Magnet on your multi-tool is used to adjust the Training Level.
  6. **Battery Cap Tool:** This is used to tighten or remove the battery cap.
  7. **Contact Post Wrench:** Use to securely fasten Contact Posts.
  8. **Test Light:** The test light allows you to test the receiver. Hold the test light over the contact posts and carry the receiver into the signal field a few feet from the ground. *When the receiver picks up the correction signal from the boundary wire, the test light will come on.*
  9. **Collar Bone:** The Collar Bone, metal lock washers and contact posts fasten the receiver to the nylon collar. (A Collar Bone is not used with the GentleFit™ posts.)
  10. **Lock Washers:** See #9.
  11. **Contact Posts:** The receiver comes with a set of stainless steel contact posts. Conductive plastic GentleFit™ contact posts may be purchased separately if preferred or if recommended by your Dealer.  
*Use care if you find it necessary to tighten the contact posts, as over-tightening could cause damage to the receiver.*



**The contact posts must touch the skin** for the dog to feel the correction. Your DogWatch Dealer will determine the correct contact posts based on your dog's coat, neck shape, and skin sensitivity. In certain cases, your Dealer may recommend clipping some of the hair around the contact posts so that they can touch the skin more easily.

**To prevent skin irritation from the contact posts, we recommend removing the collar at night and/or when not in use.** Prolonged use of the collar or a collar that is too tight may lead to pressure sores, especially if the dog has sensitive skin.

---

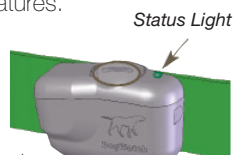
## SYSTEM 1200 RECEIVER COLLAR FEATURES

---

### Status Light

The status light on your System 1200 receiver provides these features.

- **Start-Up** When you first insert the battery, the status light will flash **red** and **green**. This indicates that the receiver has started properly. Once started, the status light will continue to flash green once every 40 seconds indicating normal operation. In the event that the light does not flash, check the battery to be sure that it has been inserted properly.
- **Training Level Indicator** When programming the training level of your receiver, the status light will flash green in conjunction with audible beeps. The number of flashes/beeps will equal the training level you have chosen.
- **Signal Field Indicator** When testing the receiver in the signal field, the status light will flash green when the receiver collar is in the audible zone and will flash red and green when the receiver collar is in the correction zone.
- **Battery Indicator** This feature monitors the voltage level of the battery. Once the receiver collar detects that the battery has reached a low voltage level, the status light will change from blinking green every 40 seconds to blinking red every 10 seconds. This indicates that your battery is close to the end of its useful life and you should change the battery within the next 3-4 days.



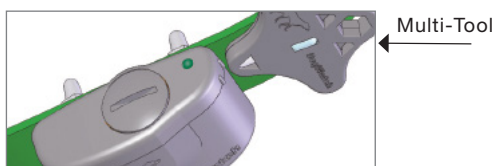
### Setting the Receiver Levels

The System 1200 receivers have 4 LEVELS OF CORRECTION plus Audible Only.

Your DogWatch Dealer will start the training on the appropriate level according to your dog's personality and traits. As training continues and your dog adjusts to the Hidden Fence, the settings may need to be adjusted.

If you need to change the training level on the receiver, hold the magnet on your Multi-Tool to the training level adjustment location on the side of the receiver (as shown below). Hold the magnet steady and you will hear a series of beeps that indicate the current training level. The training level will begin to advance while the magnet is held in position. When you reach the desired setting, pull the magnet away from the receiver.

"Audible Only" = 1 long beep  
Level 1 = **one** short beep  
Level 2 = **two** short beeps  
Level 3 = **three** short beeps  
Level 4 = **four** short beeps



*Use the magnet on the multi-tool to set the training level on the receiver.*

When the magnet activates the receiver, **the number of beeps indicates the current training level**. As long as the magnet is held in place, it will advance through the training level settings in the order shown above. (Note: Any magnet will activate the receiver.)

**Multiple Dogs:** The System 1200 allows you to select a different training level for each receiver collar on the system so you can have a different level for each dog.

---

## TRAINING TIPS & REMINDERS

---

1. Never call your dog to "come" or give a recall command when you are outside the flag line.
2. Never walk your dog through the flags during the training process.
3. Always reinforce the retreat concept by shaking the flag while saying "Watch out!" and commanding "back-back-back" when your dog receives an audible warning or a correction during the training process.
4. Keep the training consistent: 15 to 20 minutes once or twice a day.
5. NEVER throw a stick or toy into the Avoidance Zone.
6. ALWAYS maintain a positive attitude when training your dog.

**To prevent skin irritation, remove the collar at night and/or when not in use. Check the neck area regularly for skin irritation.**

**If your dog is not staying within the boundary, check the following:**

- Did you and your dog complete the Dealer-recommended training program?
- Does the battery in the receiver collar need to be replaced?
- Is the receiver collar too loose?
- Is the receiver collar operating properly?
- Is the Transmitter on and adjusted properly?
- Is the signal field too narrow?
- Is the Rate level too low?
- Is the Training Mode switch in the proper position?
- Is the boundary wire unplugged?
- Is the boundary wire broken?

The Training Guide and additional Troubleshooting Tips  
are available from your DogWatch Dealer or at:  
**[www.dogwatch.com/customer-resources](http://www.dogwatch.com/customer-resources)**

**\*\*\*Important\*\*\***

**Never change the Receiver settings when your dog is wearing the receiver collar.**



---

# WARRANTY

---

## Manufacturer's Warranty

DogWatch Inc., subject to the terms and conditions set forth hereunder, hereby warrants that it will repair or replace, at its own discretion, without charge for parts or labor, the Product or any part thereof (other than insulated wire) which is found by DogWatch Inc. to be defective by reason of improper workmanship and/or materials for the warranty period from the original date of sale hereunder for as long as the original owner owns the Product. **Warranty claims may be subject to Dealer service charges when applicable and/or manufacturer shipping and handling charges.** Except for the express Warranty stated above, DogWatch Inc. disclaims all express and implied warranties or merchantability or fitness for a particular purpose.

### As a condition of this Warranty, customer must:

- (a) Submit your Warranty registration online at [www.dogwatch.com/customer-resources](http://www.dogwatch.com/customer-resources) within seven (7) days after purchase.
- (b) Notify your authorized DogWatch Dealer or DogWatch Inc. of your claim within the Warranty period.
- (c) Mail product, insurance and postage prepaid, to your authorized DogWatch Dealer or DogWatch Inc.

DogWatch Inc.'s sole liability under this Warranty will be to repair or replace, at its option, any product or part which DogWatch Inc. determines to be defective. In no event will DogWatch Inc. be liable for any special, indirect, or consequential damages arising out of the purchase or use of the product. In no event shall DogWatch Inc.'s liability exceed the purchase price of the product.

System 1200 Warranty	Dealer Installed Warranty	Manufacturer's Warranty
System 1200 Transmitter	Lifetime	3 Years
System 1200 Receivers	Lifetime	Lifetime

DEALER-INSTALLED WARRANTY: Any Hidden Fence™ Transmitter installed by an authorized Dealer, equipped with a DogWatch Lightning Surge Protector and grounded to DogWatch Inc. specifications, for the Warranty period from the original date of sale hereunder for as long as the original owner owns the Product.

INSTALLATION AND MAINTENANCE: Dealer shall, for a non-refundable installation fee, install the Product. In no event shall Dealer or DogWatch Inc. be responsible for damage to underground pipes, wires, lines, or other items, nor shall Dealer or DogWatch Inc. be responsible for restoring Customer's premises to its original condition.

---

---

## WARNINGS:

- ▶ YOU MUST TRAIN YOUR DOG IN ACCORDANCE WITH YOUR DEALER'S INSTRUCTIONS FOR THIS SYSTEM TO BE EFFECTIVE.
- ▶ THE SYSTEM IS NOT INTENDED FOR USE WITH DOGS WITH A HISTORY OF AGGRESSIVE BEHAVIOR. BY SIGNING THE DEALER ORDER FORM, CUSTOMER ACKNOWLEDGES THAT THEIR DOG(S) HAVE NO SUCH HISTORY.
- ▶ THE PRODUCT WILL NOT KEEP ALL DOGS WITHIN THE FENCED PREMISES IN ALL INSTANCES. IF CUSTOMER'S DOG(S) COULD CAUSE HARM TO ITSELF OR OTHERS INSIDE OR OUTSIDE THE FENCED PREMISES, CUSTOMER SHOULD TAKE ADDITIONAL MEASURES TO RESTRAIN THEIR DOG(S).

DogWatch, DogWatch logos, Performance Series, SafeLink, FastReact, AutoMemory, and It's All About Your Dog are registered trademarks of DogWatch Inc. DogWatch Hidden Fence, DogWatch SmartFencing, DogWatch receiver collar, Pet-Friendly, PowerPak, Surrounding Pets With Freedom Since 1990, Simply The Best...No Getting Around It and Smart Products for Today's Pets are Trademarks of DogWatch Inc.

DogWatch products are protected under U.S. Patent numbers: 6,079,367; 6,360,698; 6,467,435; 6,575,120; 6,825,768 and 8,006,649.